



## About Us

### Our Philosophy

Today clients require more sophistication and are more demanding. Client will always keep changing and so will consulting business. We strongly believe that true value addition provided by consulting business is about knowledge sharing and meeting client's business objectives. Knowledge that helps improve overall productivity and efficiency.

Consulting companies must draw a framework of services, driven by processes, that not only demonstrate technical expertise, but operational excellence, functional efficiency, management effectiveness, financial viability, and a deeper understanding of client's business objectives and deliverables, too.

Consulting companies must leverage their network of resources in combining the parameters, efficiently, required to deliver a solution that meets client's business objectives and goals and exceed their expectations.

### Our Values

*Establishing relationships built on trust, integrity, and knowledge. Mutual respect and professionalism are the foundation of any business.*

*We have a deep sense of commitment towards our employees, customers, and business partners, to develop and sustain long term business relationships based on ethical business practices, high quality services, and deliver on our promise, every time.*

### Our Credentials

- Nominated by Sabre Holdings, a S&P 500 Company, for 'MBE Supplier of the year 2005' award.
- Nominated by DFW-MBC for 'MBE Class -II' Supplier of the year 2005 award.
- Rated as one of the 'Top Women Owned Business' in United States by DiversityBusiness.Com.

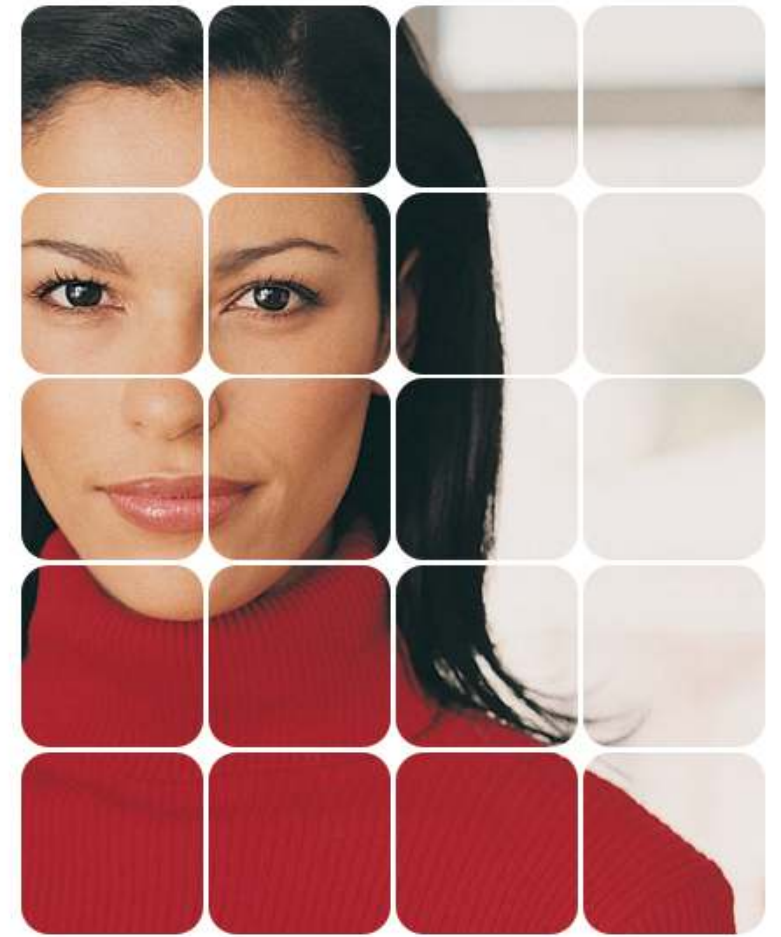
### Contact Us:

Corporate Address  
4 Consulting, Inc.  
1701 North Greenville Avenue,  
Suite 1100,  
Richardson, Texas – 75081  
Tel: (214) 698-8633  
Fax: (214) 698-8630  
Email: [marketing@4ci-usa.com](mailto:marketing@4ci-usa.com)  
Web: <http://www.4ci-usa.com>

Registered Offices:  
State of CA, DE, GA, FL

1701 North Greenville Avenue  
Suite 1100  
Richardson, Texas - 75081

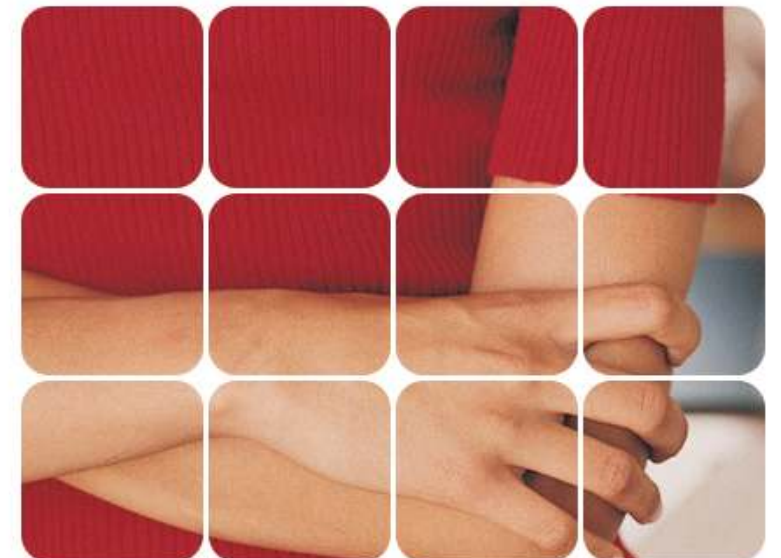
Phone: 214-698-8633  
Fax: 214-698-8630  
E-mail: [marketing@4ci-usa.com](mailto:marketing@4ci-usa.com)  
Web: <http://www.4ci-usa.com>  
Registered Offices in: CA, DE, FL, GA, PA



## 4 CONSULTING, INC.

BUSINESS PROCESS ANALYSIS  
WHERE BUSINESS VALUE RESIDES

### Knowledge Based Consulting



## Business Process Analysis

### A Deeper Perspective

Business Analysis has acquired great importance in today's world with a major segment in the IT world concentrating on requirements, analysis, design and process modeling.

It is always important to focus on modeling as it is crucial to consider requirements as that would be valuable for all aspects including what stakeholders want; the analysis phase always includes the investigation on the details pertaining to the requirements and then the focus shifts to fulfilling these requirements in the design phase.

### Our Approach

#### Requirements Analysis Stage

During the analysis stage, gather your department's business requirements and environmental considerations.

#### Capture and analyze your requirements and identify critical issues

The analysis includes consideration of the following:

- ... business functions to be developed
- ... all data required for these business functions
- ... business rules determining data behavior, constraints, limits, relationships, life-cycle
- ... business function flow
- ... related business systems on and off campus
- ... interfaces with other external and internal business systems
- ... existing data that may have to be converted
- ... opportunities for re-engineering
- ... preliminary transition plan
- ... security requirements
- ... technical architectures which maximize opportunities for appropriate sharing of information across the campus community
- ... critical success factors (up-time, business response time, etc.)
- ... architectural issues such as network and systems capacity planning



#### Initiate Operations Planning

- ... determine how the application will be deployed
- ... determine how technical and functional upgrades be accomplished
- ... determine desktop and server hardware and need to upgrade or change end-user desktop computers
- ... determine timing and strategy for backing up data
- ... Initiate disaster planning
- ... determine resources to support ongoing operations addressing application and hardware maintenance
- ... develop a communication plan

#### Produce an analysis summary of high level conclusions

The analysis summary includes an assessment of the following:

- ... acceptable approaches
- ... acceptable technologies and general architectures
- ... unacceptable approaches
- ... unacceptable technologies and general architectures
- ... risks
- ... opportunities for re-engineering
- ... refinement of resource needs (people, money, environment).

#### Prototype Phase

Develop a prototype if there are candidate technologies or approaches which require further investigation for viability or suitability as a result of the analysis phase. The prototype can continue to evolve throughout the project life-cycle.

#### Design & Analysis Stage

##### General Design

The general design captures and documents a technology-independent view of the business process to automate, as well as preliminary planning of these other aspects of the project:

- ... business flow
- ... data structures
- ... data conversions
- ... interfaces to other systems
- ... coding and other appropriate infrastructure standards, such as conformance to campus data administration standards as they are developed
- ... technical architecture (development, testing, training, production environments, and capacity planning)



#### Detail Design

The detail design consists of technical specifications for all software objects to be built, including:

- ... data structure implementation
- ... data integrity implementation

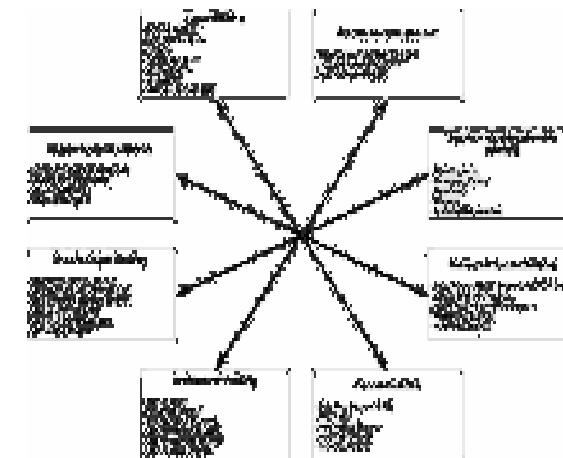
The detail design also consists of other plans to be finalized, such as:

- ... training, test, implementation, configuration management (includes version control, code migration, security, application server, etc.)
- ... contingency plan, disaster recovery, capacity growth

#### Review Detail Design

- ... Business expert review
- ... Quality assurance review to assure that all requirements are met and standards have been followed
- ... System architectural review to ensure that designs have no integrity problems, are compatible and that the technical architecture is viable

There are several modeling categories to help with business process modeling stages.



A general example of the solution delivery model of the business process analysis phase of the SDLC phase is as shown below:

#### Phases & Purpose

##### Phase 1: Planning

- ... Required to determine the feasibility of whether the project should proceed or not.
- ... Produces a high level overview document of the project which relates to the project requirements and scope.

##### Phase 2: Definition

- ... Defines what, when, who, and how the project will be carried out.
- ... This phase expands on the high-level project outline and provides a specific and detailed project definition.

##### Phase 3: Analysis

- ... Required to understand and document the user's needs for the system.
- ... Documents in detail the scope, business objectives and requirements of the system.

##### Phase 4: Design/Build

- ... Describes how the proposed system is to be built.
- ... The design is specific to the technical requirements the system will be required to operate in and the tools used in building the system.
- ... Deals with the development, unit testing and integration testing of the system modules, screens and reports and data replication to the data warehouse if required.
- ... Carried out in parallel with the development of user procedures and user documentation from the implementation phase.

##### Phase 5: Implementation

- ... Prepare for and carry out the implementation of the developed system through user acceptance testing to full production.

Corporations are built & organized around business processes. Activities performed within these business processes consume majority of resources. These processes are the point of connection with customers, suppliers, & their business partners. This is truly where value resides. That is why it is very critical that corporations have very efficient and productive business processes. This is the stage where business value perceived by corporations is identified and built into the development process cycle.

4Ci provides high end solutions that deliver effective skills, techniques and methods to analyze and improve business processes within a corporation. Our resources have the expertise gained from years of experience, in depth knowledge of best practices, and supporting technology. 4Ci consultants have experience in analysis, redesign, & re-engineer existing business processes. 4Ci provides turnkey solution that will include analysis, strategy build up, & process implementation by utilization of various tools & techniques & industry wide accepted methodologies.